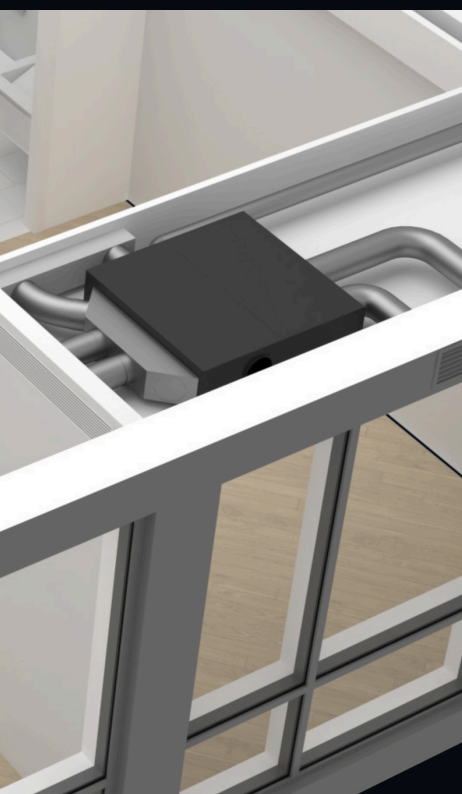


# HRA-i Plus

[Climadesign.com](http://Climadesign.com)



3	HRA-i Plus
4	Key Features
5	Ceiling Ducted
8	Vertical Stack
11	Contact Us



# HRA-i Plus

The HRA-i Plus is a compact, all-in-one HVAC solution that integrates a high-efficiency inverter heat pump, advanced ERV, MERV 13 filter, and bathroom exhaust into a single unit. Designed for spaces like offices, hotel rooms, apartments, and more, it simplifies design, installation, and maintenance. The single-package system eliminates the need for an outdoor unit and line sets, making it easy to install without brazing or pressure testing.

Available in two configurations—Vertical Stack and Ceiling Ducted—the HRA-i Plus is versatile enough to fit a range of layouts. Its sleek, paintable metal cabinet blends seamlessly with any decor, while its compact footprint and all-in-one functionality make it ideal for tight spaces and streamlined handling.

# Key Features



## No Outdoor Unit

The single package design means no outdoor unit, freeing up space on rooftops and at ground level and enabling installations in buildings without space for an outdoor unit.



## Twin rotary inverter compressor

The state-of-the-art twin rotary BLDC inverter compressor operates efficiently, quietly, and with minimal vibration. HRA-I-PLUS is ideal for any room or area that requires between 4,000 and 11,000 BTU.



## Integrated ERV

HRA-I-PLUS's integrated ERV eliminates the requirement of installing an independent ERV system, ducting, electrical work, and engineering.



## Compact Footprint

HRA-I-PLUS's compact form with no line sets means there is no need to access the sides of the unit. Mount units with as little as 3/4 inch clearance on all sides. Compact footprints take up minimum space.



## Integrated Bathroom Exhaust System

The integrated exhaust maintains air pressure in bathrooms and kitchens, eliminating the need for separate systems. HRAI units offer automated control via ON/OFF and boost contacts linked to a washroom switch relay.



## Intelligent Defrosting

HRA-I-PLUS's intelligent defrosting system means more time heating and less time on reverse cycle defrost.



## High-efficiency ECM Fans with Variable ESP

High-efficiency ECM fans enable efficient and quiet operation as the EC motor can ramp up or down depending on the need. Automatically adjusted external static pressure ensures correct airflow.



## Versatile On/Off Options

HRA-I-PLUS's low voltage connection enables connection to any occupancy system, key-card, window sensors, fire alarms, etc.; as long as it can send a signal to HRA-I-PLUS via low voltage, the unit can be easily turned on or off.



# Ceiling Ducted

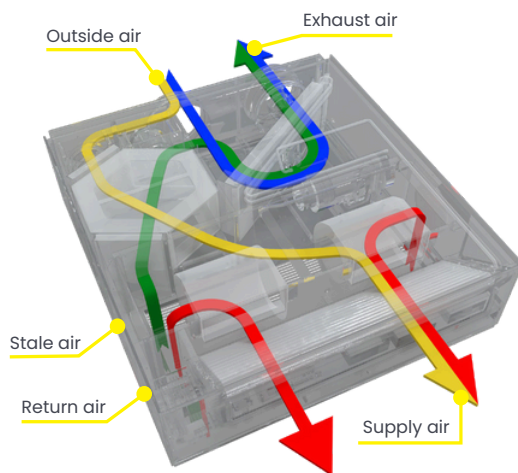
HRA-i Ceiling ducted can be discreetly installed above a ceiling and is ideal for single or multi-room applications. This unit can be used where ducting is required. Use with any interior grille and louver to provide additional design flexibility. A bathroom exhaust can connect to the dedicated stale air exhaust.



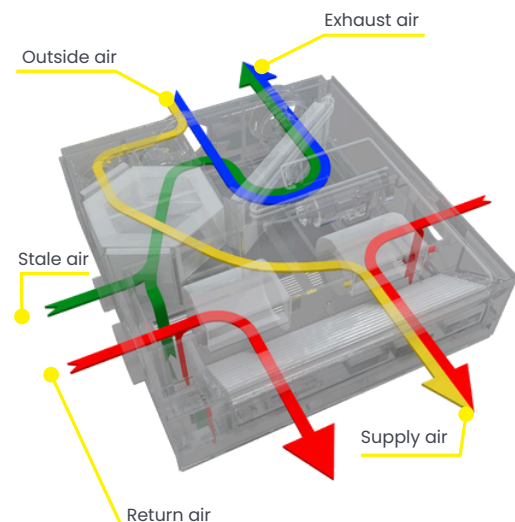
## Airflow

HRA-i Ceiling Ducted is flexible in many ways. It can be fully ducted or used with minimal or no ducting. This flexibility enables HRA-i Ceiling Ducted to be placed anywhere in a dwelling without restrictions.

### Bottom return



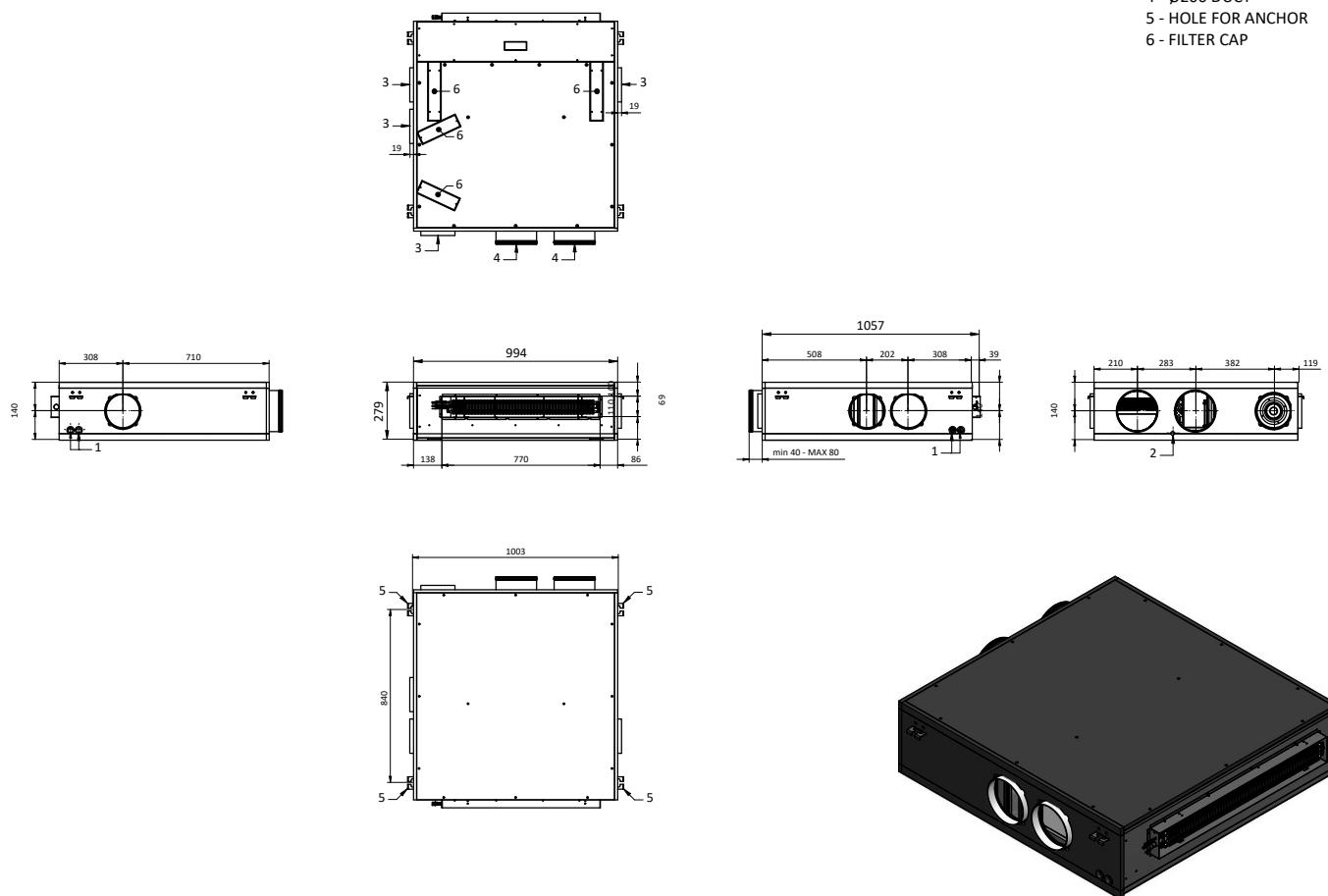
### Side return



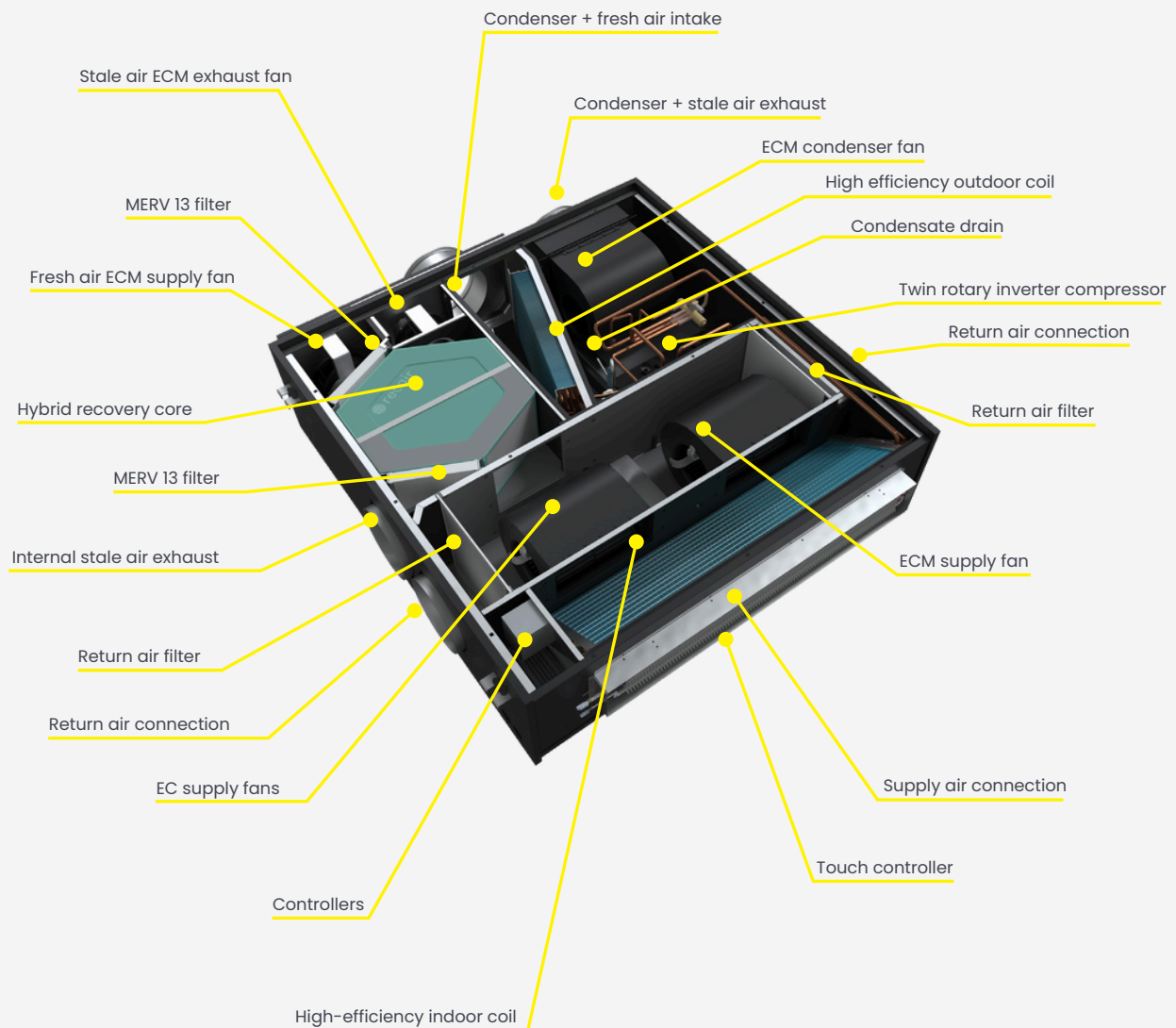
■ Outside air ■ Recirculate air ■ Fresh air intake ■ Stale air exhaust

# Dimensions

- 1 - POWER SUPPLY
- 2 - CONDENSATE DISCHARGE
- 3 - Ø160 FEMALE DUCT
- 4 - Ø200 DUCT
- 5 - HOLE FOR ANCHOR
- 6 - FILTER CAP



# What's Inside



# Vertical Stack

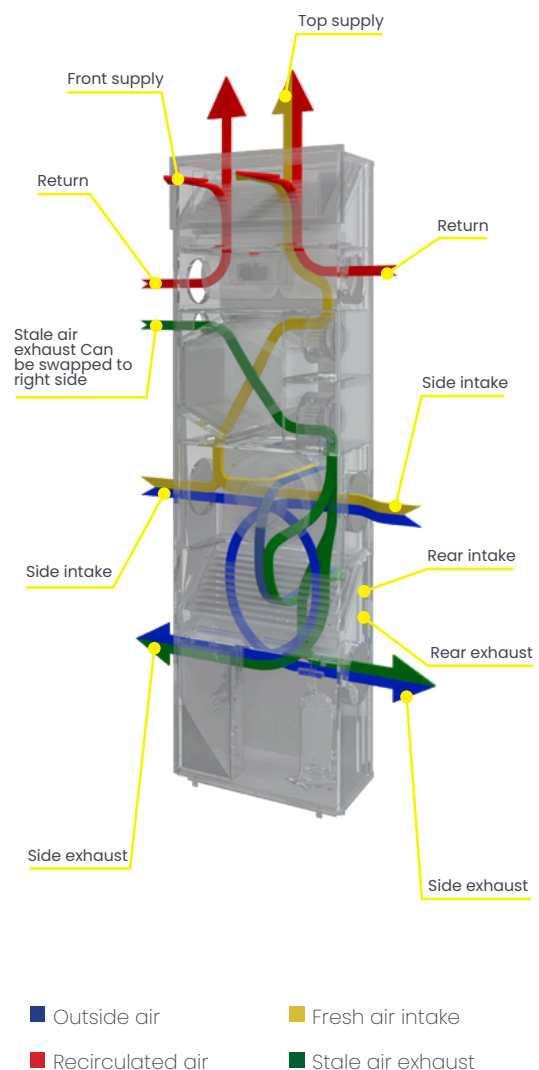
HRA-i PLUS vertical stack is the ideal multi-room solution when a ceiling-mounted unit is not desired or feasible. The compact 12-inch by 25-inch compact footprint uses minimal floor space. This unit is perfect anywhere direct venting or ducting is required with up to 0.6" external static pressure. Use any grille and louvers for maximum design flexibility.

A unique feature of HRI-I-PLUS vertical stack unit is that it can be installed on a corridor wall, enabling the unit to be fully serviced without entering the apartment or hotel room. A bathroom exhaust can connect to the dedicated stale air exhaust.

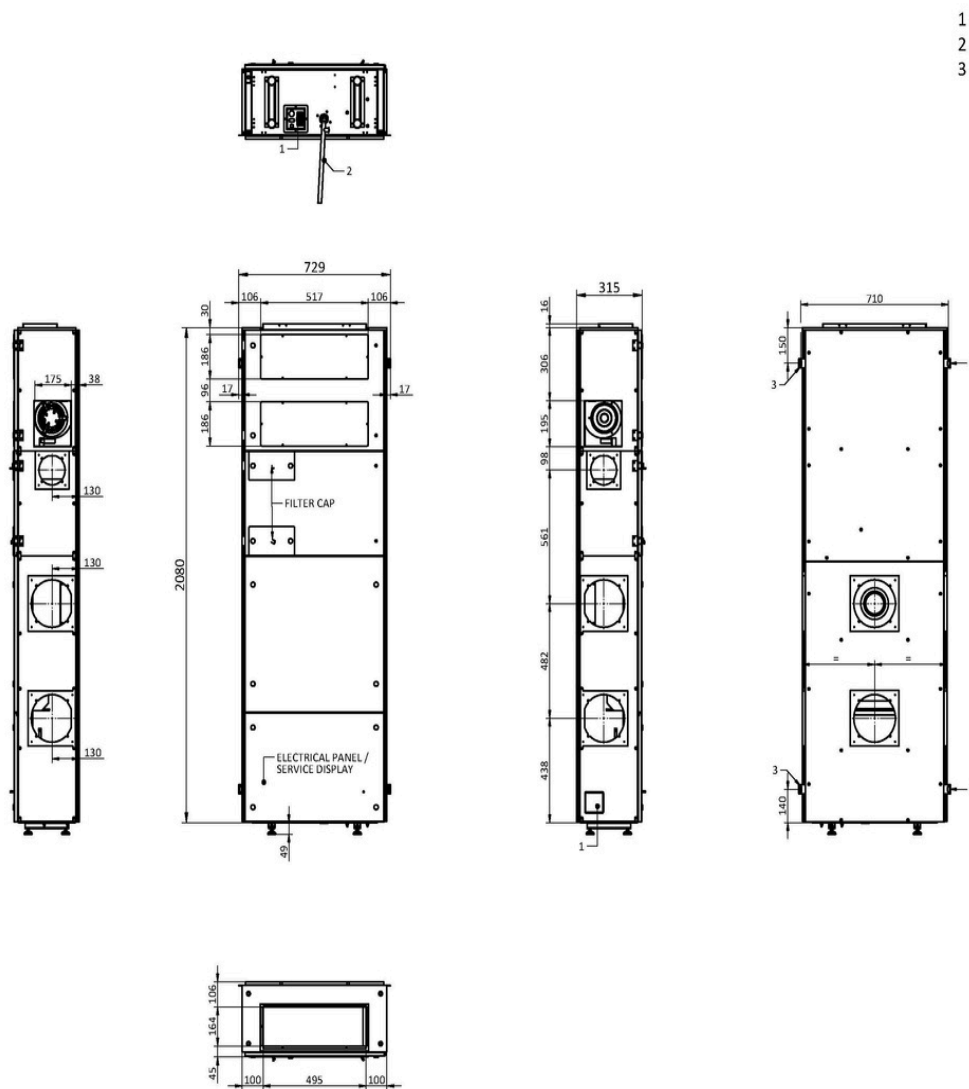


## Airflow

HRA-i Vertical Stack is extraordinarily flexible in the many ways it can be fully ducted or used with minimal or no ducting. This flexibility enables Vertical Stack to be placed anywhere in a dwelling with no restrictions.

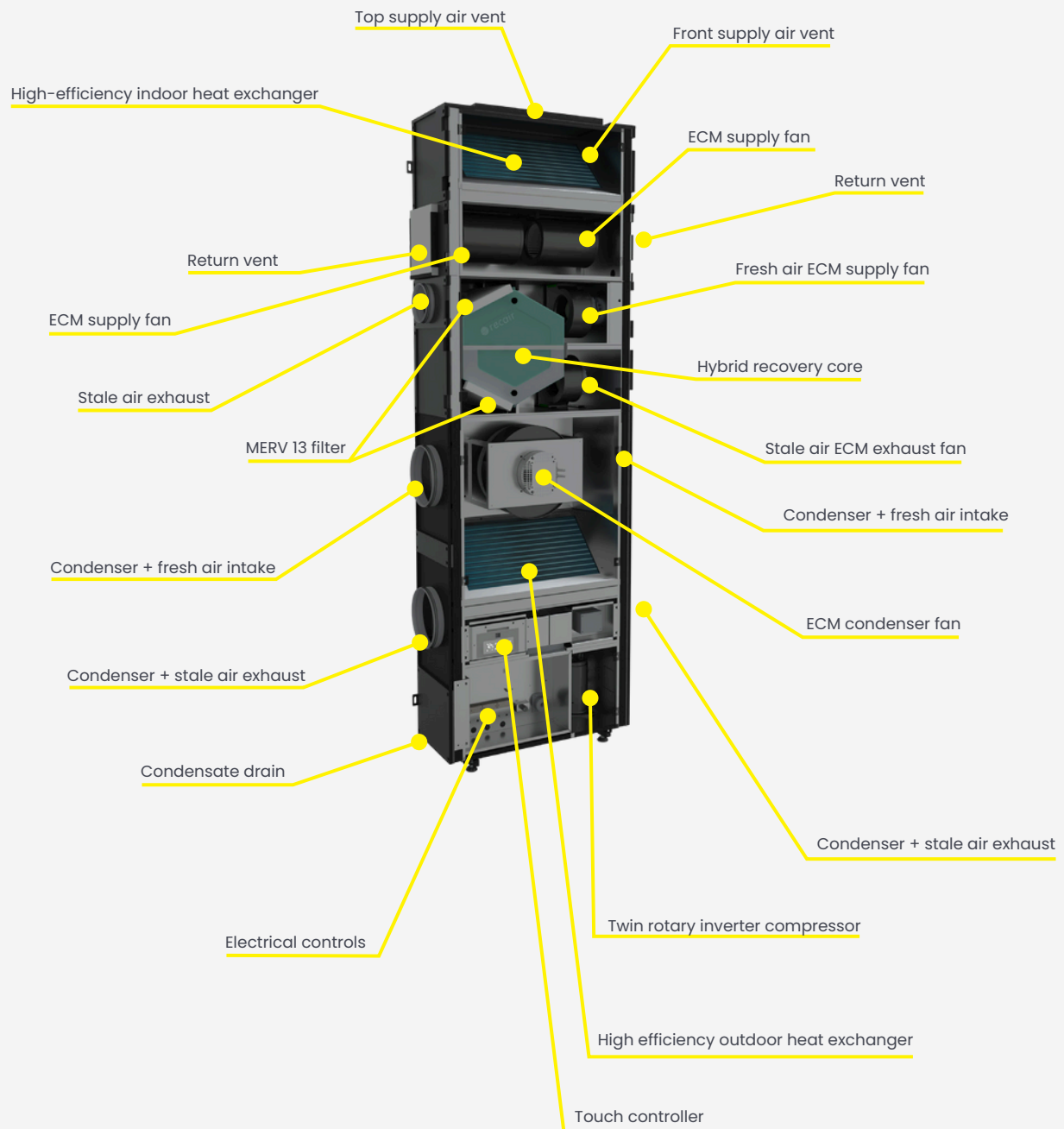


# Dimensions





# What's Inside



# Contact Us



[info@climadesigntech.com](mailto:info@climadesigntech.com)



[www.climadesign.com](http://www.climadesign.com)



604.474.0167